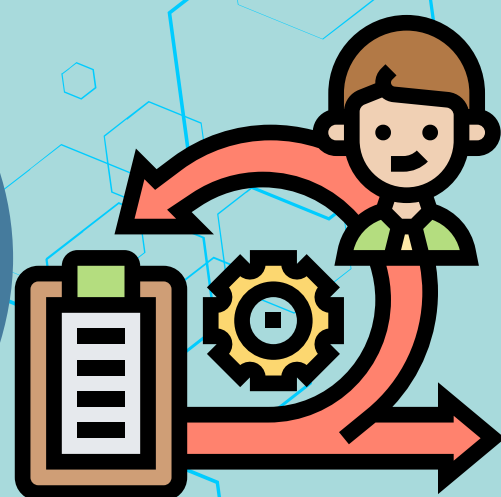


# Updating Open Dental

## Before You Update:

- Your practice must be on support.
- Check if your office has special update steps.
- Ensure everyone is out of Open Dental during the update.

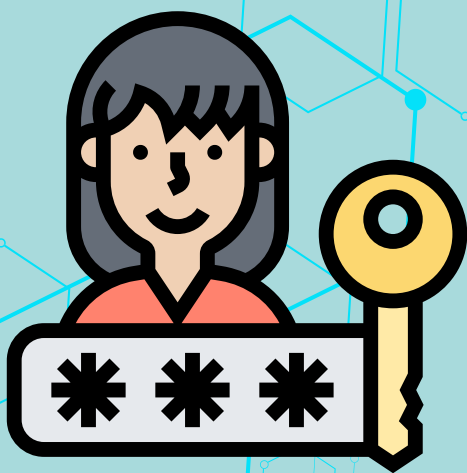
1



2

## Log in to the Server

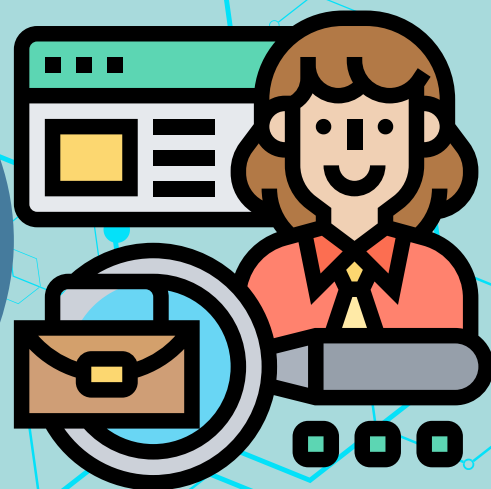
We recommend that you perform the update from the server.



## Check for Updates

In Open Dental, go to the Help menu and click Update to see if there are updates available.

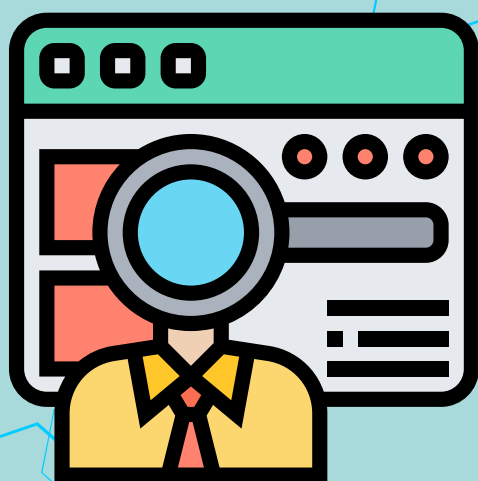
3



4

## Install Updates

If updates are available, click Install and follow any onscreen prompts.



## Re-Launch Open Dental

Right-click Open Dental and Run as Administrator to open. Once it's finished updating, log into Open Dental as usual.

5



6

## Update Workstations

Follow step 5 on each workstation. Now you're done! Enjoy your new and improved Open Dental.

